



HIGH LINE CANAL CONSERVANCY

Connecting Communities – Connecting Nature
From the Foothills to the Plains

Photo credit: Evan Anderman

2025
Conservation Easement Monitoring

TIMELINE

Conservation Easement Monitoring Miles:

	Mile	Monitor Date	Notes	Time (Hours)
1	18	6/30/2025		0.84
	19	6/2/2025		1.92
	20	6/30/2025		0.75
2	21	7/21/2025		0.56
	22	7/21/2025		0.53
3	23	7/21/2025		0.4
	24	6/3/2025		0.54
4	25	7/11/2025		0.52
	26	7/11/2025		0.95
5	27	7/11/2025		0.35
	28	7/11/2025		0.45
6	29	7/11/2025		0.48
	30	6/5/2025		0.57
7	31	6/5/2025		0.58
	32	6/23/2025		0.68
8	33	6/23/2025		0.46
	34	7/24/2025		0.57
9	35	7/24/2025		1
	36	7/24/2025		0.4
10	38	7/10/2025		0.2
	39	7/10/2025		0.48
11	40	7/10/2025		0.35
	41	7/10/2025		0.36
12	42	7/10/2025		0.3
	43	7/10/2025		0.34
13	44	7/31/2025		0.37
	45	5/28/2025		1.58
14	46	7/31/2025		0.41
	47	7/31/2025		0.3
15	48	8/1/2025		0.5

Day Schedule:

- Morning Prep (30 minutes)
 - o Map miles to monitor for that day
 - o Figure parking areas
 - o Download map region on landscape, if necessary
 - o Sunscreen, water, grab snack
- Drive to site
- Monitoring (45-50 minutes/ mile)
 - o 2-3 miles / day = ~17-24days

End of May-Sept

TOTAL HOURS IN A DAY: 4 hours

May

S	M	T	W	T	F	S
27	28	29	30	1	2	3
4	5	6	7	8	9	10
11	12	13	14	15	16	17
18	19	20	21	22	23	24
25	26	27	28	29	30	31
1	2	3	4	5	6	7

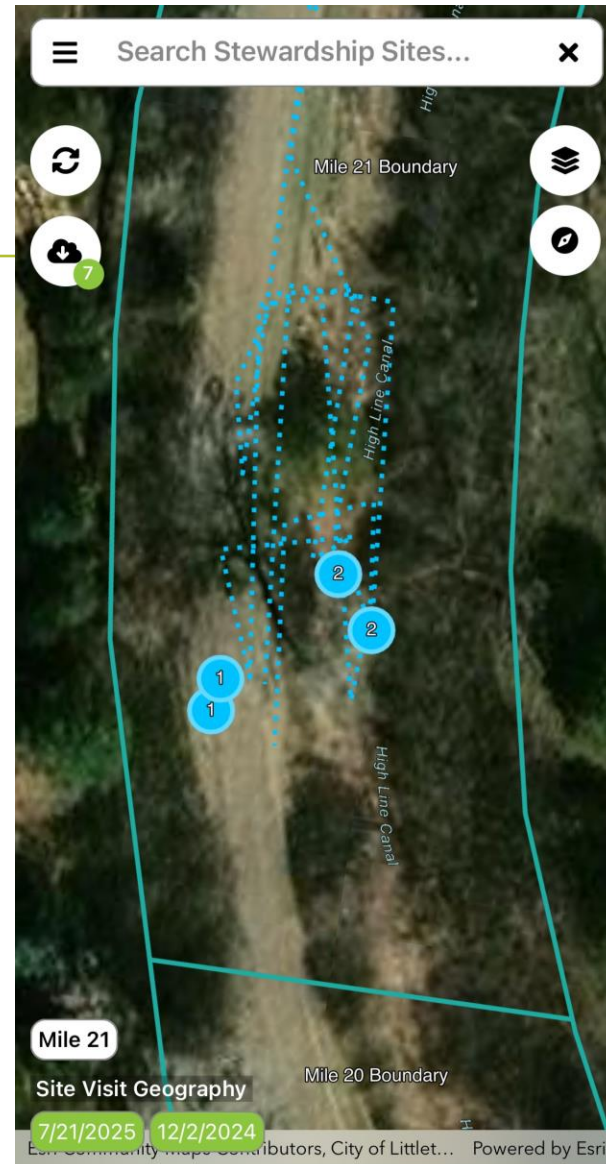
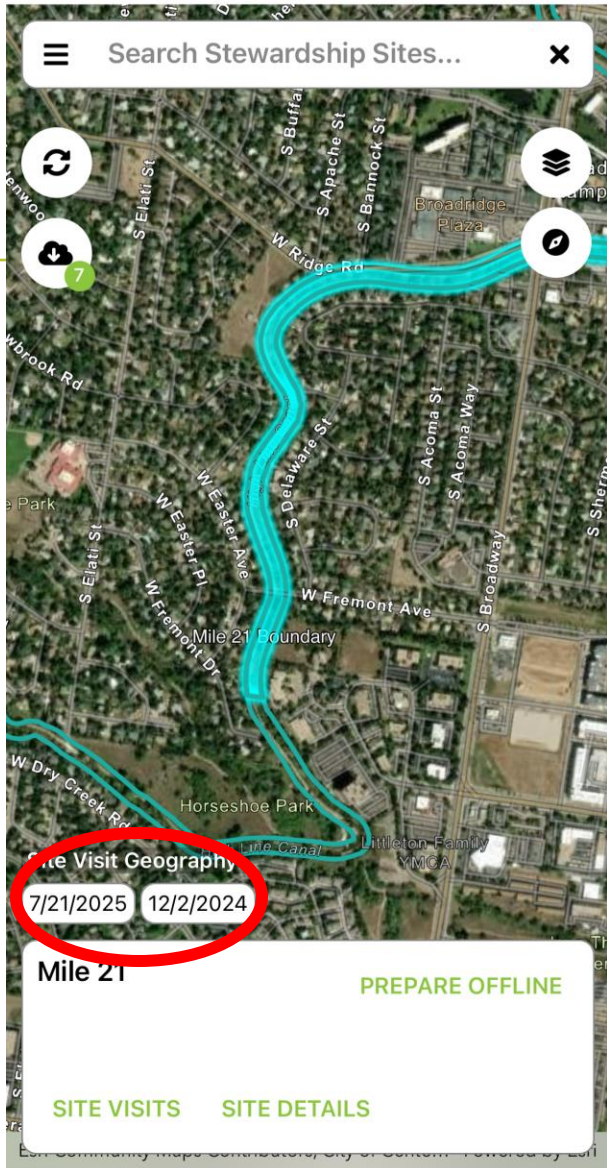
June

S	M	T	W	T	F	S
1	2	3	4	5	6	7
8	9	10	11	12	13	14
15	16	17	18	19	20	21
22	23	24	25	26	27	28
29	30	1	2	3	4	5
6	7	8	9	10	11	12

July

S	M	T	W	T	F	S
29	30	1	2	3	4	5
6	7	8	9	10	11	12
13	14	15	16	17	18	19
20	21	22	23	24	25	26
27	28	29	30	31	1	2
3	4	5	6	7	8	9





2024



Mile 21

2025





2024

2025



COTTONWOOD
GRAVEYARD

Cherry Hills Village – Mile 35



Dec 2024



July 2025

2024



2025



Mile 64

Property Information

Name: Mile 20
Local Jurisdiction: Southwest Arapahoe Division
County/Province: Arapahoe County
Size (Acres): 13.66

Interest Holders & Contacts

Landowner	Landowner
Gini Pingenot	Glen Poole
Arapahoe County Open Spaces	Arapahoe County Open Spaces

Monitoring Details

Summary:

Mile 20 had no easement violations. Most of this mile stretch has dense vegetation and trees that make the canal less visible during the spring and summer season. Compared to mile 19, mile 20 has less standing water in the canal. Some of the newly planted trees from 2023 are dying, however, there are still a handful of trees that are establishing well. The only change that's occurred in mile 20 is some tree removal work (hazardous Cottonwood trees and Russian Olives). Overall, no noticeable violations have occurred within this area.

Date: 6/30/2025 **Visit Length:** 0.75 hours **Start Time:** 5:00 PM **End Time:** 5:45 PM

Time Tracking:

<u>Name</u>	<u>Role</u>	<u>Hours</u>
Krystal Tran	Staff	672.53

Landowner Questions

Summarized Report by Mile 2025 Monitoring Reports

Site Assessment

A form section that contains questions about monitoring details and observations.

Attendees

List attendees and their affiliation (e.g. HLCC, landowner, rec agency, etc.)

Krystal, HLCC Staff

Weather conditions at time of visit

- Sunny
- Cloudy
- Precipitation
- Snow cover
- Other

Observation Map

The data displayed on this map was collected via the Landscape mobile app. Boundaries are approximate and may not reflect surveyed positions.

